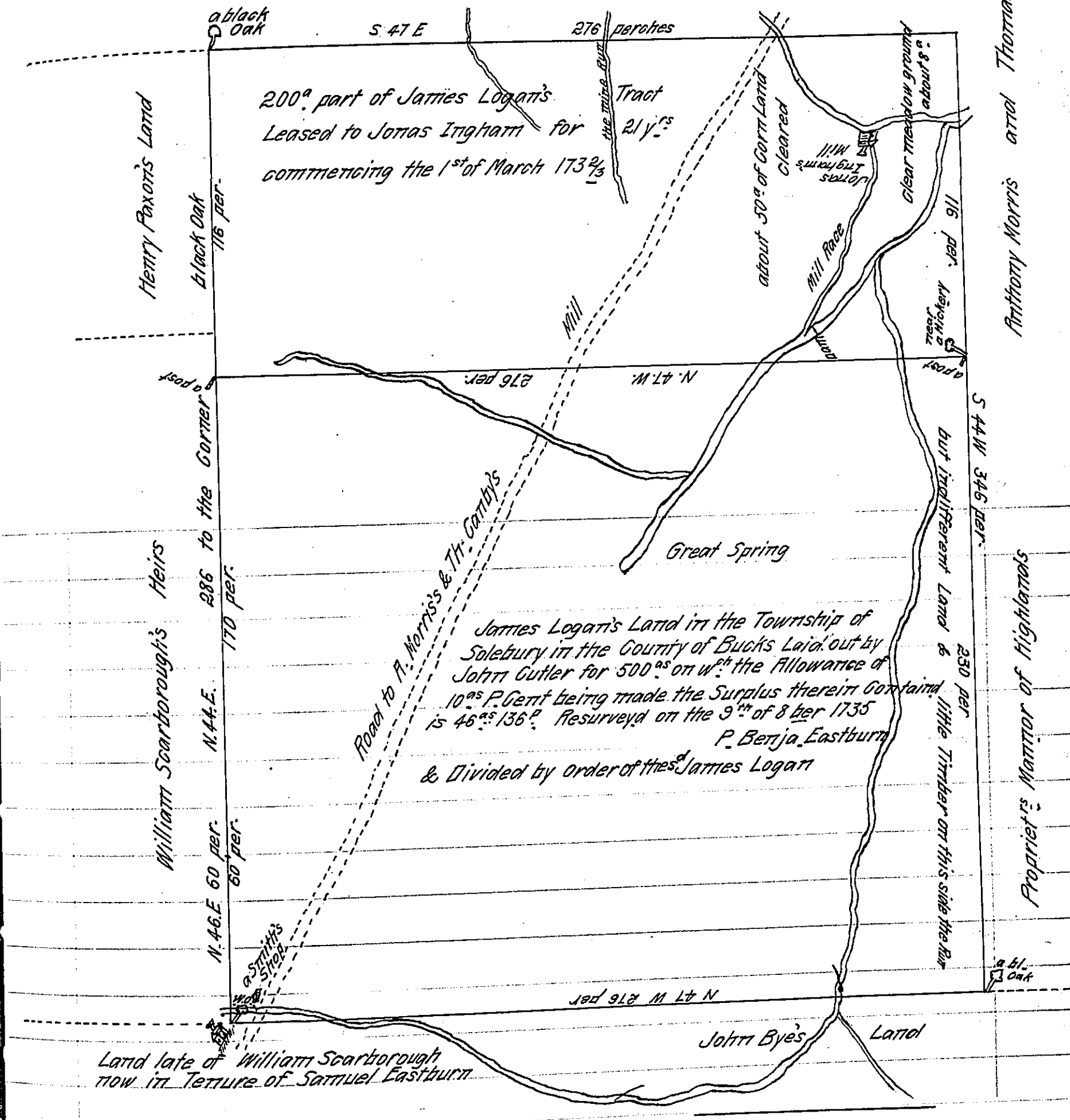


Lattice Lot Morris's Land part of the Tract formerly of Robert Heath

Land formerly of Robert Heath now of



IN TESTIMONY that the above is a copy of the original remaining on file in the Department of Internal Affairs of Pennsylvania, made conformably to an Act of Assembly approved the 16th day of February, 1833, I have hereunto set my Hand and caused the Seal of said Department to be affixed at Harrisburg, this Second day of August 1910

*Nancy Houck*

Secretary of Internal Affairs.